

From syngeneic to humanized murine models: addressing the needs for novel immunotherapies (efficacy evaluation and biomarker discovery)

J.-F. MIRJOLET¹, C. MIGNARD¹, M. HILLAIRET DE BOISFERON¹, X. TIZON¹, S. MAUBANT¹, O. RAGUIN¹, A.-L. NUGUES¹, J. ROCCHETTI¹, G. SERIN¹, P. PROVENT¹, F. LE VACON², C. PENSEC², C. BERTHET¹, P. SLOS¹, F. BICHAT¹, F. VIVIANI¹

For more information: contact@oncodesign.com / www.oncodesign.com

¹Oncodesign, Dijon (FRANCE), ²Biofortis Mérieux NutriSciences, Saint-Herblain (FRANCE)



Oncodesign innovative technology platform

► All integrated in a translational drug discovery engine

OncoSNIPe®
Bio-informatics module to identify characteristics shared by sub-groups of patients who are resistant to available therapies



Humanized models



Chi-Mice®
Humanized animal models (PDX, immune system, organs)



Pharmimage®
Pharmaco-imaging modalities (preclinical and clinical) – including radiochemistry



Predict®
Orientation platform: *in-vitro* and *in-vivo* pharmacology models (mouse and rat models)

Nanocyclix®
Medicinal chemistry: 7500+ macrocyclic kinase inhibitors



T.O.T (Time on Target)

Cell-based tests to predict and speed up the progress of Oncodesign's programs towards their therapeutic indication

SYNGENEIC MODEL
Mouse / Rat
Chemoinduced
Subcutaneous / Systemic / Orthotopic
Metastasis

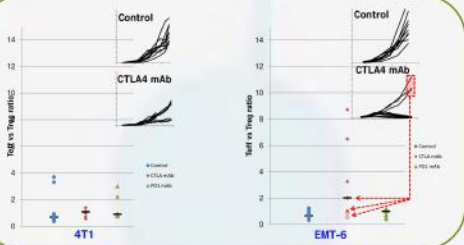
CELL LINE DERIVED XENOGRAFT
Mouse / Rat
Subcutaneous / Systemic / Orthotopic
Metastasis

PATIENT DERIVED XENOGRAFT
Mouse / Rat
Subcutaneous / Orthotopic
Metastasis

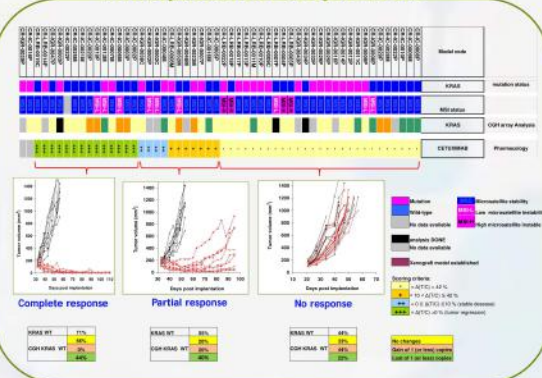
HUMANIZED MOUSE
Mouse
Immune system (PBMCs or HSCs)
Liver / Skin / Tumor bearing



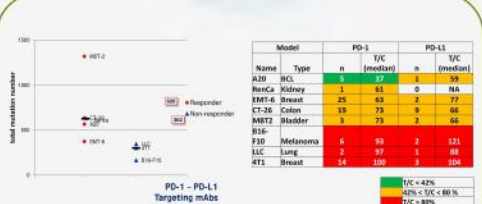
Immune Infiltrates and response to therapy



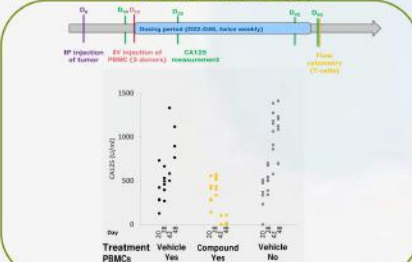
Efficacy biomarker analysis in PDX



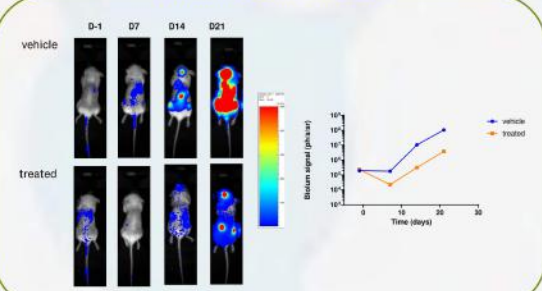
Genomic analysis in syngeneic mouse



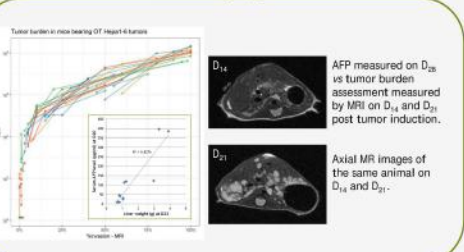
Efficacy biomarker analysis in Humanized mouse



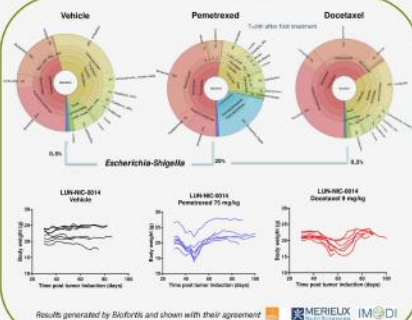
Bioluminescence Imaging



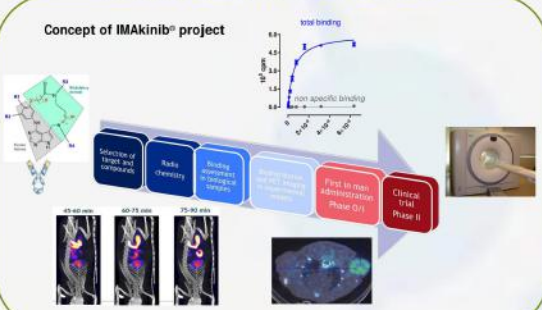
MR Imaging



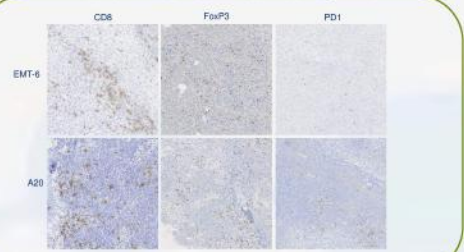
Microbiota analysis



Flowchart of radiotracer development



Immune infiltrates in tumors by IHC



Luminex – cytokine release profile

